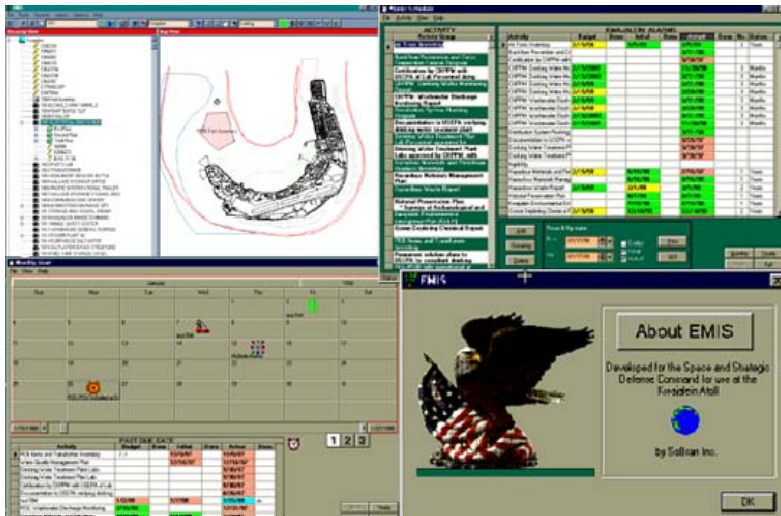


Advanced Integrated Infrastructure Management System (AIMS)



Project Summary:

AIMS is a document and data management tool that is integrated with an ESRI GIS mapping component.

The AIMTECH AIMS is a computer-based facility, installation, and environmental management tool that combines the power of relational databases and geographic information systems (GIS) to provide a user-friendly interface for organizing, storing, retrieving, and displaying environmental and facility data from a manager's desktop.

US Army Kwajalein Atoll EMIS is the most versatile of the AIMS implementations; this system encompasses installation restoration investigations and characterizations, in addition to compliance and permit tracking, facility issues, and cultural resource management.

The Kwajalein AIMS is linked by internet to the US Army Space and Strategic Defense Command, over 7,000 miles away and keeps the Command updated on environmental activities at Kwajalein.

This system also contains an electronic archive of over 200 documents covering the range of environmental studies conducted at Kwajalein over the past 10 years.

VISIT US AT WWW.MCHCORP.COM FOR MORE INFORMATION



Information Technology
& Security Solutions



Client:

U.S. Department of Energy Technical Service Center

U.S. Army Kwajalein Atoll Ballistic Missile Defense Test Site

Location:

Oak Ridge, TN & Kwajalein Atoll

"...In all my dealings with MCH Corporation I have witnessed nothing but professionalism, a desire to please the customer, and a desire by its consultants to meet all the requirements on time and on budget."

Richard Machanoff, Manager
Technology Applications
Hazardous Waste Remedial Action Programs
Lockheed Martin Energy Systems

PLEASE CALL US FOR MORE
INFORMATION AT:

1-800-392-2103



Advanced Infrastructure Solutions
Networking Infrastructure Solutions
Information Worker Solutions